

HILTON RUBY LAKE SALES

Orlando, Florida



Client Project

As Hilton Hotels Corporation continued its development in the timeshare market with a stylish resort planned at Ruby Lake in Orlando, the need for an equally stylish sales center was apparent. Construction was booming and Hilton had to find a larger space in time for the development's opening to house its additional sales staff.

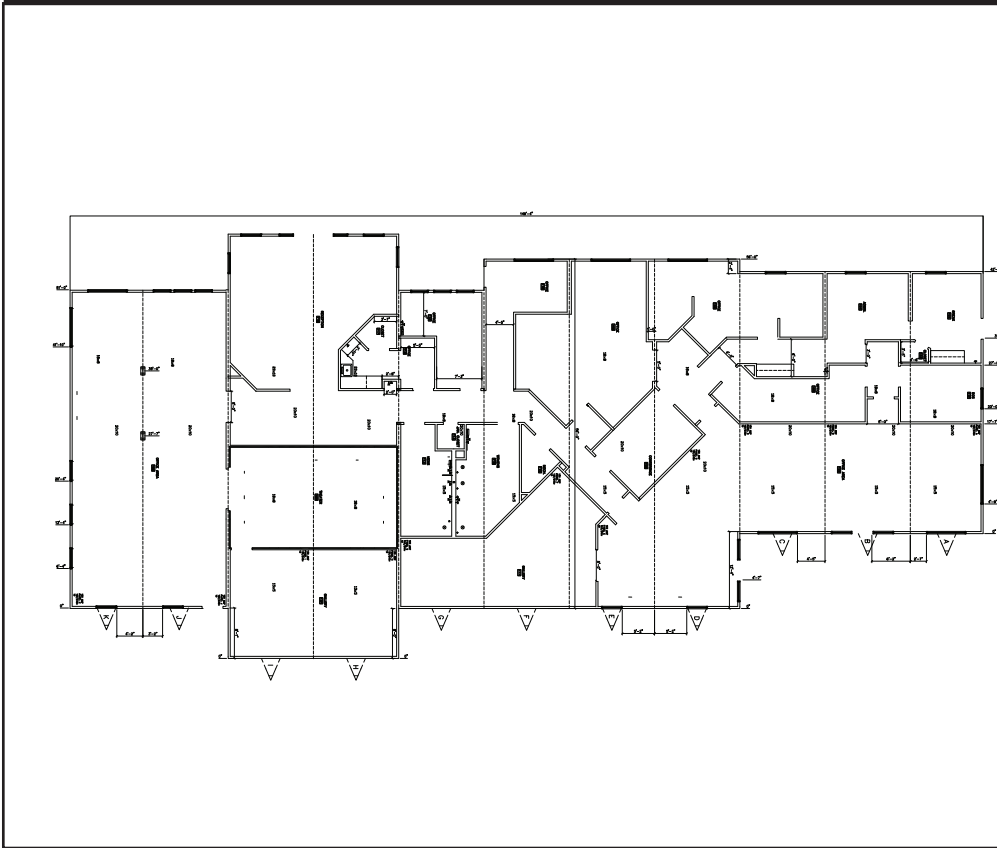
Client Need

Hilton was no stranger to modular facilities. Mobile offices, storage containers and temporary sales center could be found popping up on several Hilton construction sites. In fact, Hilton planned to use one of its existing modular sales center, but due to the aggressive construction schedule and scale of the Ruby Lake project, Hilton decided that a larger, more customized modular sales office would best fit their requirements. Hilton found that modular offered the flexibility needed to match certain materials and specifications requested by the owner for the exterior and interior of the building.



HILTON RUBY LAKE SALES

Orlando, Florida



The Williams Scotsman Solution

Williams Scotsman provided a custom configured 7,800 square foot model sales center in less than 90 days. Specifically engineered to support the load of two timeshare towers, the sales center's interior incorporated 24" x 24" marble tile, crown molding, stone counter tops and wood grain cabinets. Recessed canned and track lighting complimented the various offices and reception areas. PCL Construction, the company hired by Hilton as Ruby Lake project management, contracted Williams Scotsman to provide turn-key data and phone installation and an HVAC system. The exterior was finished with custom paint, decking and metal Spanish tile mansard to coordinate with the timeshare towers.

The Result

As a result of Williams Scotsman's modular expertise, extensive vendor base and relationships with local contractors, Ruby Lake and its project management team received a quality sales center suited to fit their needs to complete the timeshare project on time.

"We would use Williams Scotsman again. Their coordination and willingness to complete the project in a timely manner are impressive," stated Sean Jackson, project manager for PCL Construction who managed Ruby Lake on behalf of Hilton. "We are going to order more construction trailers for this same project."

WILLIAMS SCOTSMAN

ORDER RECEIVED

8-7-06

DELIVERY

10-23-06

INSTALLATION

10-24-06

COMPLETION

12-22-06

SPACE BY

WILLIAMS

SCOTSMAN

800.782.1500

www.willscot.com